

An international innovation park:

Leap forward into the
21st century for the Swiss
business community.

Help realise a vision.

Information for sponsors and partners.

The following institutions support the project for a Swiss Innovation Park:



ETH

Eidgenössische Technische Hochschule Zürich
Swiss Federal Institute of Technology Zurich



Universität Zürich



Materials Science & Technology

Swiss Research Foundation Feasibility Association

Board

Prof. Dr. Peter Gomez, President of the Swiss Stock Exchange (SWX)

Ruedi Noser, Entrepreneur, National Councillor

Dr. iur. Fritz Schiesser, President of the ETH council

Dr. Thomas von Waldkirch, President of the Zurich Technopark Foundation

Dr. Elmar Wiederin, Senior Partner and Chairman, The Boston Consulting Group (Switzerland)

Prof. Dr. Alexander Zehnder, former president of the ETH council

Contact

Marc Thalmann, Managing Director

Telephone +41 55 254 51 51, E-Mail thalmann@stiftung-forschung-schweiz.ch

www.stiftung-forschung-schweiz.ch

An address with international flair.

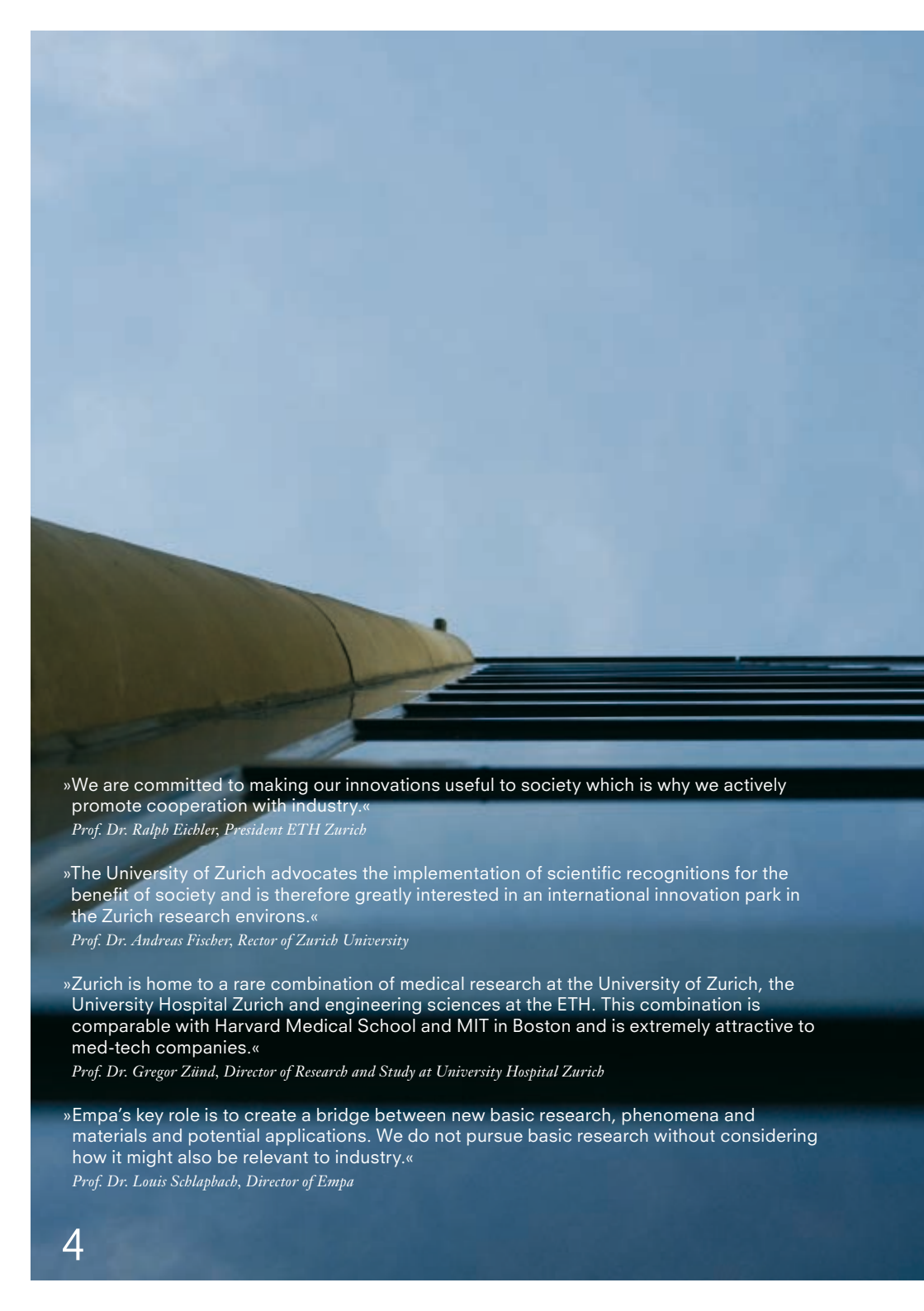
→ The Swiss scientific community occupies a top position in the international arena. Education, research and innovation drive the Swiss business motor. They constitute a key factor in the prosperity and high quality of life in Switzerland and guarantee young people a wealth of development prospects.

The knowledge and technology transfer between universities and industry in Switzerland is promoted by various initiatives (e.g. the Zurich Technopark). However, there is no location where international companies are linked to university research; where research workplaces contribute directly to the value creation chain. An innovation park with international flair can do exactly that.

Universities, large scientific institutions and international companies can settle in the Swiss innovation park to cooperate on joint research questions and transform the insights into innovations. Due to the geographical concentration of the entire value creation chain, from universities and business starters to industry, knowledge will be transferred effectively and huge creative potential released.

The Swiss Innovation Park is a vision that will strengthen the Swiss research and business community for many decades to come. The Federal Council, communities at the airfield and universities have already endorsed the idea of a national innovation park: now it is up to the business community to show their advocacy of the Swiss Innovation Park.

Support our vision: we invite you and your company to sponsor the Swiss Research Foundation as the body responsible for a national innovation park. Sponsor companies contribute between 3,000 and 100,000 Swiss francs – depending on the size of their company – to the Swiss Research Foundation. This contribution is used to finance professional management and project development, legal consultancy, acquisition and communication leading up to the inauguration of the Swiss Innovation Park.



»We are committed to making our innovations useful to society which is why we actively promote cooperation with industry.«

Prof. Dr. Ralph Eichler, President ETH Zurich

»The University of Zurich advocates the implementation of scientific recognitions for the benefit of society and is therefore greatly interested in an international innovation park in the Zurich research environs.«

Prof. Dr. Andreas Fischer, Rector of Zurich University

»Zurich is home to a rare combination of medical research at the University of Zurich, the University Hospital Zurich and engineering sciences at the ETH. This combination is comparable with Harvard Medical School and MIT in Boston and is extremely attractive to med-tech companies.«

Prof. Dr. Gregor Zünd, Director of Research and Study at University Hospital Zurich

»Empa's key role is to create a bridge between new basic research, phenomena and materials and potential applications. We do not pursue basic research without considering how it might also be relevant to industry.«

Prof. Dr. Louis Schlupbach, Director of Empa

Global success stories.

→ In recent years, dozens of international Science Parks all over the world have built up successful track records.

Asia

China: Hong Kong Science and Technology Parks; Shanghai Pudong Software Park

India: International Tech Park, Bangalore; HITEC City, Hyderabad

Japan: Kansai Science City, Kyoto

Singapore: Singapore Science Park

Malaysia: Technology Park Malaysia

Europe

Belgium: Louvain-la-Neuve Science Park

Germany: Wissenschaftsstadtteil Adlershof, Berlin

England: Cambridge Science Park; Oxford Science Park; Wavertree Technology Park

Finland: Otaniemi Science Park in Espoo; Turku Science Park

France: Sophia Antipolis, Nizza; Nancy Brabois

Netherlands: Science Park Amsterdam; Science Park Eindhoven; Bio Science Park Leiden

North America

Boston: Massachusetts Biotech-Cluster; Technology Square and University Park at MIT
California/San Francisco: NASA Ames Research Park; CITRIS Center, Berkeley; Bio-X Center, Stanford; Silicon Valley, San Jose
North Carolina: Research Triangle Park, North Carolina

Source: Feasibility study for a national innovation park, benchmark analysis by the Institute of Technology and Innovation Management at the ETH Zurich, 2007



»In view of the ideal location with its good communication links, I'm convinced that cooperation between research and industry will be promoted and strengthened nationwide. It's no accident that the project is called the „Swiss Innovation Park“.«

Dr. Eva Desarzens-Wunderlin, member of the Bern cantonal parliament

»A successful innovation park in Dübendorf offers benefits for the whole of Switzerland. International companies need strong suppliers and partners. The canton of Graubünden will also profit by it.«

Hansjörg Trachsel, senior civil servant, canton of Graubünden

From airfield to innovation park.

→ The success of the Swiss Innovation Park depends on the willingness of international companies to establish subsidiaries or locate a F&D team there. With the Dübendorf airfield site, Switzerland has a terrain that could optimally fulfill the requirements of international companies. The suitability of the site for a Swiss Innovation Park has been extensively confirmed by a feasibility study conducted in 2007. The army will probably discontinue use of the Dübendorf airfield for flight operations from 2014 onwards.

The airfield site encompasses approx. 265 hectares. The site can and should be developed over a period of up to twenty or thirty years and thus offers companies and investors long-term growth and development potential. Even with an optimum mix of workplaces, residential and leisure facilities, the Swiss Innovation Park will only cover 70 to 80 hectares, i.e. a third of the site. The remaining area can be used as a public recreation area.

The Dübendorf airfield site is located on the perimeter of Zurich. The Dübendorf airfield site is one of the best connected meadows in Europe if not the whole world. Both the Zurich-Kloten Intercontinental Airport and Zurich city centre can be easily reached by public transport in a few minutes.

Research companies seek proximity to established universities and thus access to highly qualified staff. The universities and technical universities actively support the idea of the Swiss Innovation Park in Dübendorf. The ETH domain has located two institutions in Dübendorf, the Empa and the Eawag; in the future, these institutes might form the core of an innovation centre at Dübendorf. With its high quality of life, international schools and low taxes, the metropolitan region of Zurich is predestined to act as a magnet for international companies and highly qualified personnel.



»An innovation park on the site of the present military airfield represents a unique opportunity for Dübendorf. The project is actively supported by the public authorities.«

Lotbar Ziörjen, Major of Dübendorf

»An innovation park is undoubtedly the most sustainable and forward-looking idea for the Dübendorf airfield site. This project would provide important land reserves for our children.«

Regula Thalman, President of the cantonal council, Zurich

»The city of Zurich has a major interest in assuring that the region can offer space to companies unable to find suitable premises in the environs of the city.«

Elmar Ledergerber, Mayor of Zurich

A generations project.

MILESTONES

2006 Jet flight operations are discontinued at Dübendorf military airfield.

2006 The FDP broaches the idea of a national research centre in Dübendorf.

2007 A feasibility study confirms that the Dübendorf airfield site is ideal for an international innovation park. The study can be downloaded at www.stiftung-forschung-schweiz.ch.

2008 In its report dated 14 March 2008 the Federal Council positively assesses the idea of an innovation park in Dübendorf and commissions the establishment of the foundation.

2008 No more fixed-wing aircraft operations in Dübendorf. Helicopter operations are to continued to 2010, maximally 2014.

End of 2008 Foundation of the Swiss Research Foundation

By 2009 Decision by army on the long-term use of the military base in Dübendorf

By 2009 Test plan by the Canton of Zurich

By approx. 2011 Adjustment of cantonal and regional residential and traffic orientation plans, zone planning (design plan, neighbourhood plan)

2012/2013 Approval of zone plan by the Canton of Zurich, building approval procedure

2014 Probable end of military use of the airfield, drafting of development plans

From 2015 Construction start, occupation by the first tenants/investors of the Swiss Innovation Park

Supporting the interests of the business community.

The Swiss Research Foundation.

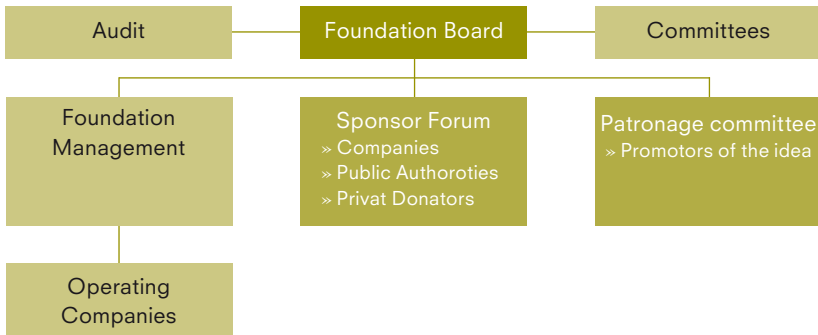
→ Pursuant to the Federal Council report of 14 March 2008, the business community is called upon to create an organisation responsible for negotiations on the future of the airfield site in Dübendorf. A Swiss Innovation Park is to be developed in 2014, when military usage of the site is completed. Initiatives for subdivision of the Swiss Innovation Park have already taken place in west Switzerland and Oberwallis.

The private-law Swiss Research Foundation is designated as organisation responsible for a Swiss innovation park. It assures wide-ranging support and offers stakeholders a common platform. The Swiss Research Foundation is to be founded at the end of 2008.

In the first phase, private companies and universities will be actively engaged in the Swiss Research Foundation. The Foundation promotes the idea of an innovation park. It represents the interests of the business community and acts as a negotiating partner to the federal government, cantons and on-site communities. According to the Federal Council, the Federal Government should make the land in Dübendorf available by building law and at the same time, waive ground rent.

An operating company, responsible to the foundation management, is to be founded for the professional management and marketing of the Swiss Innovation Park. The federal government will enjoy a »Return on Investment« from the marketing of the attractive location at current market prices. The Foundation profits will flow back to the federal government and into national research funding (e.g. to the National Fund or KTI).

ORGANISATION



Excerpt from the statutes

The object of the foundation is to promote Swiss research and innovation strength and thus afford a significant contribution to the economic performance of the Swiss business community.

The foundation supports national education, research and innovation activities (BFI activities) through profitable, professional reutilisation of unused publicly owned properties.

To this end the Foundation supports in particular

- » the step-by-step establishment of an innovation park with international flair on the site of the Dübendorf military airfield by means of financial and non-material support of the appropriate activities.
- » cooperation within the framework of the Foundation's object between representatives from industry, central and local government (federal government, cantons and municipalities), politics as well as further interested institutions.
- » the awareness level of the vision of the Swiss Research Foundation and the Swiss Innovation Park.

»Switzerland, with all its benefits, has major potential for becoming an international innovation centre. The Dübendorf airfield site would offer large American companies the research space that, up to now, they have often sought in Switzerland to no avail.«

Martin Naville, CEO Swiss-American Chamber of Commerce

»The quality of life is exceptionally high in Switzerland. As a rule, employees who have come to us from abroad, never want to leave again.«

Dr. Matthias Kaiserswerth, Director of IBM's Zurich Research Laboratory

»Swiss industry depends on future-oriented research, for instance in micro-electronics or material coating, if we want to keep jobs in Switzerland. An innovation park in Dübendorf might offer such research and industrial jobs.«

Johann N. Schneider-Anmann, President, Swissmem

»The success of Switzerland is based on a good education for all and innovative research of international calibre. Initiatives such as the Swiss Research Foundation uphold this tradition. They promote entrepreneurship that, through investment in research and innovation, achieves maximum value creation.«

Walter B. Kielholz, President of the Board of Directors, Credit Suisse

Help realise a vision

Become a sponsor now.

– Until the inauguration of the Swiss Innovation Park pre-investment in the region of around five million Swiss francs is required. These funds will be used to finance management and project development, legal consultancy, acquisition and communication. Pre-investment is to be funded substantially by the business community. In funding the preliminary phase up to the inauguration of the innovation park, the business community endorses its wish for this generations project.

Sponsors contribute between 3,000 and 100,000 Swiss francs – in relation to the size of their company – to the Swiss Research Foundation. The sponsor contribution can be paid once or spread over four years. Sponsors are automatically entitled to a seat in the sponsor forum of the Swiss Innovation Park and benefit from an exclusive business and scientific network. The foundation is accountable to the sponsor forum.

BUDGET 2008 TO 2014

(Expenditure in 1,000 Swiss francs)

	2008	2009	2010	2011	2012	2013	2014	
Foundation Management	120	210	210	210	210	210	210	
Management	100	200	200	200	200	200	200	
Legal consultancy	20	10	10	10	10	10	10	
Project development	150	100	150	200	350	300	550	
Strategic planning	50		50		50		50	
Implementation	100	100	100	200	300	300	500	
Marketing and communication	240	170	170	290	290	290	370	
Acquisition	40	80	80	150	150	150	150	
PR	50	50	50	100	100	100	180	
Branding	50	10	10	10	10	10	10	
Internet	50	10	10	10	10	10	10	
Printed matter	50	20	20	20	20	20	20	
Total	510	480	530	700	850	800	1130	5000

»Education and innovation are and remain key factors in the success of the Swiss economy. A national innovation park injects additional impetus and bundles all relevant capabilities. From which we will all benefit.«

Dr. Rolf Dörig, Board of Directors delegate, Swiss Life

»I personally support endeavours on behalf of an innovation park in Dübendorf because this idea, which is designed to strengthen the technological community, deserves to be given a chance.«

Gerold Bührer, President, economiesuisse

»I was impressed by the aspiring vision of the initiators of the Swiss Research Foundation. A centre for research and innovation in the scale of the Swiss Innovation Park in Dübendorf is a cutting-edge enterprise for Switzerland. At the nexus between business, science and talent the Innovation Park will make Dübendorf's former airfield a primary site for entrepreneurship, investment and know-how and propel Zurich's image as a thriving business location.«

James J. Schiro, CEO Zurich Financial Services

Imprint

Published by: Swiss Research Foundation Feasibility Association

Concept and Design: cR Kommunikation, Küsnacht

Pictures: Nicole Weder, Bern

August 2008

